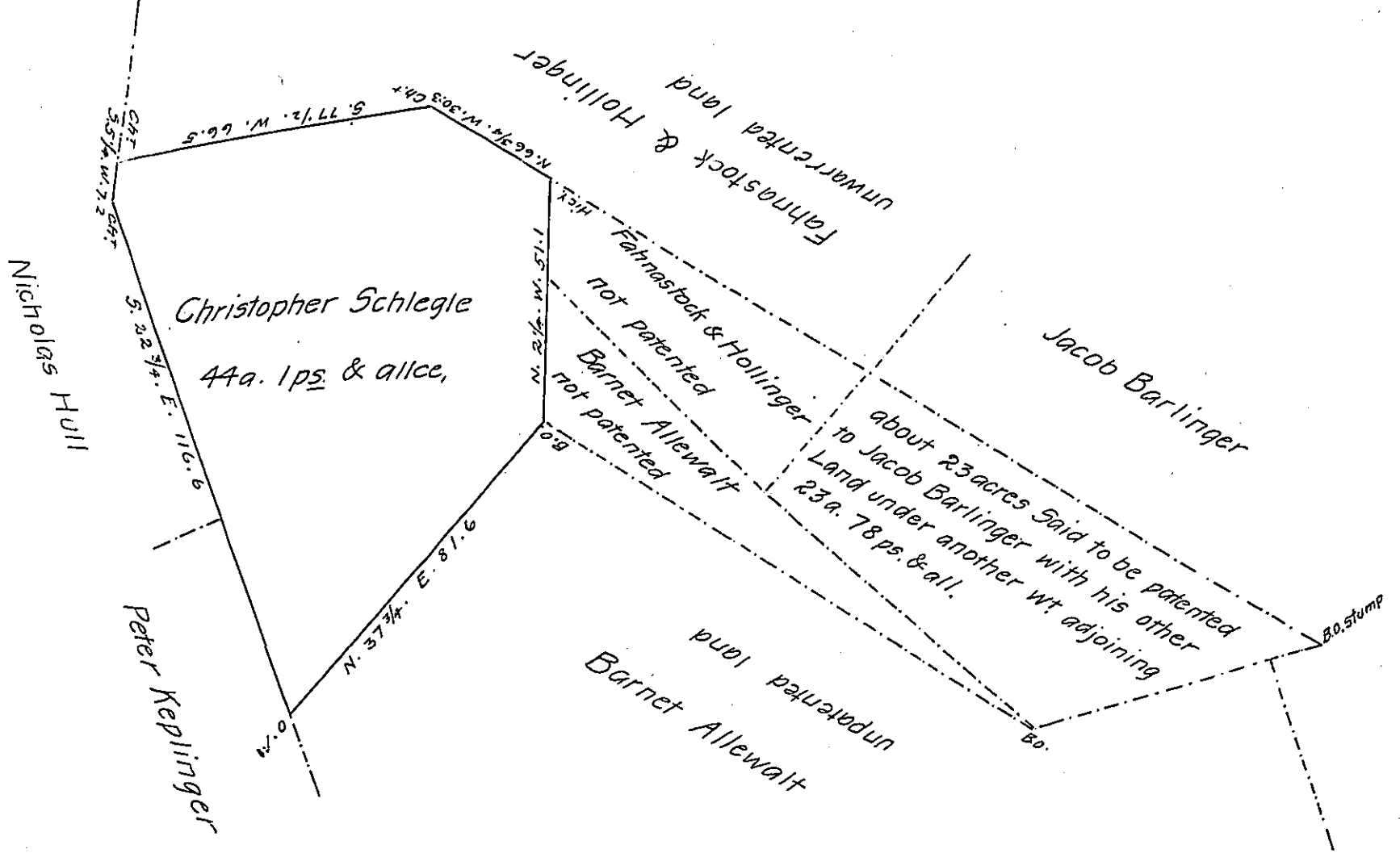


FORM NO 1.



Situated in Berwick Township Adams County, Being part of
 a larger tract of 87 a. 53 ps. & alle. Surveyed December 19th. 1805 by warrant
 to Christopher Schlegle Dated 28th. July 1750 for 50 a. divided from whole tract
 same day containing 44 a. 1 ps. & alls.

By Saml Sloan D.S.

To Saml Cochran Esqr.
 Surveyor General

IN TESTIMONY that the above is a copy of the original remaining on file in
 the Department of Internal Affairs of Pennsylvania, made
 conformably to an Act of Assembly approved the 16th day of
 February, 1833, I have hereunto set my Hand and caused
 the Seal of said Department to be affixed at Harrisburg,
 this ninth day of March 1907.

Samuel Sloan
 Secretary of Internal Affairs.